

OT1000

MEAT TEMPERATURE LOGGER WITH FLEXIBLE EXTERNAL PROBE



Features

- Memory Wrap Around
- Software Configurable
- Real-time Operation
- Programmable Start Time
- User-friendly
- NIST Traceable
- IP67
- Food Safe

Benefits

- Simple Setup and Installation
- Minimal Long-Term Maintenance
- Long-Term Field Deployment

Applications

- HACCP compliance
- Complying with USDA regulations
- Meat processing
- Meat storage
- Meat shipping
- Smoke houses
- Precision temperature recording
- Replace costly strip chart recorders
- Food process monitoring

The MadgeTech OT1000 is a temperature data logger equipped with a 4 in piercing probe. The OT1000's rugged design makes it perfectly suited for use in smokehouses, ovens and other cooking processes up to 212 °F (100 °C) as well as refrigerators and freezers down to -4 °F (-20 °C).

The OT1000 is made of food grade Tecaform® and features a convenient mounting hook. The device is rated as IP67 and is completely splash proof. The device can withstand wash down cycles making it the ideal logger for harsh environments.

The OT1000 is simple to use, just activate the logger in the software, insert the probe into the product and the logger will record the temperature though the process at the user selected reading rate. Once the process is complete, simply download the data to a PC for further analysis.

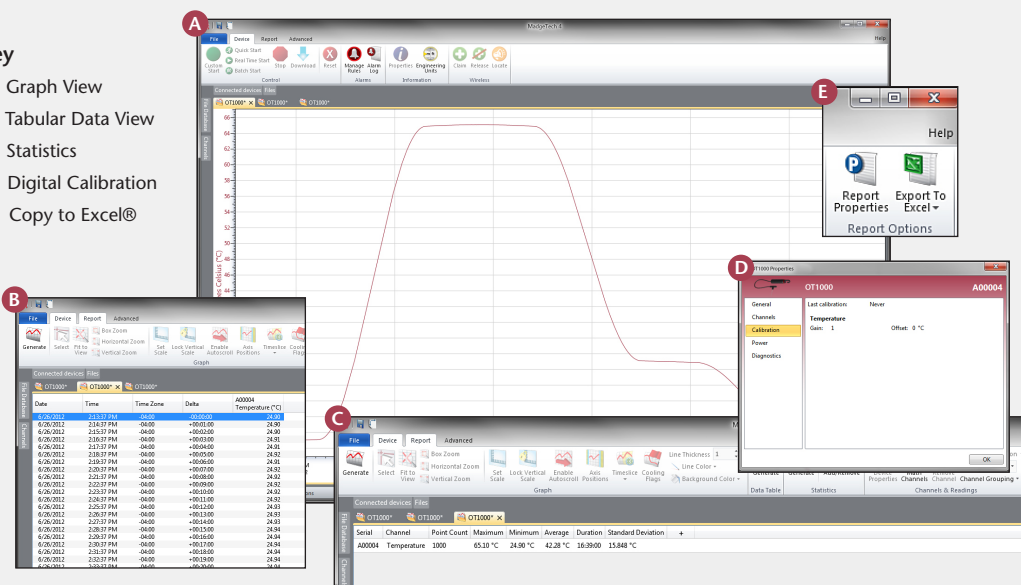
The MadgeTech data logging software efficiently provides users with the tools necessary to create reports and analyze data. MadgeTech's easy to use software also features user programmable critical control points, called "cooling flags" to assist in compliance with USDA Appendix B. The "cooling flags" are automatically annotated on the graph and tabular data views. The summary tab provides the cool down duration between each critical control point. The data can also be automatically exported to Excel® for further calculations.



MADGETECH DATA LOGGER SOFTWARE

Key

- A** Graph View
- B** Tabular Data View
- C** Statistics
- D** Digital Calibration
- E** Copy to Excel®



Software Features:

- Multiple graph overlay
- Statistics
- Digital calibration
- Zoom in/ zoom out
- Lethality equations (F0, PU)
- Mean Kinetic Temperature
- Full time zone support
- Data annotation
- Min./Max./Average lines
- Data table view
- Automatic report generation
- Summary view
- Multilingual

