



# Bourdon Tube Pressure Gauges

Square and Rectangular Case

Copper Alloy Wetted Parts

Accuracy  $\pm 1.5\%$  of Span

Industrial Series Dry Case • Type 214.11

## Pressure Gauges

### Application

Panel mounting industrial pressure gauge. Suitable for all gaseous and liquid media that will not obstruct the pressure system or attack copper alloy wetted parts.

### Sizes

48 x 24, 72 x 36, 72 x 72, and 96 x 96 mm

### Accuracy

$\pm 1.5\%$  of span

### Ranges

Vacuum ranges

48 x 24 mm: Pressure from 10 PSI to 600 PSI

72 x 36 mm: Pressure from 10 PSI to 600 PSI

72 x 72 mm: Pressure from 10 PSI to 6,000 PSI

96 x 96 mm: Pressure from 10 PSI to 15,000 PSI

or other equivalent units of pressure or vacuum

### Working Range

Steady:  $3/4$  of full scale value

Fluctuating:  $2/3$  of full scale value

Short time: full scale value

### Operating Temperature

Ambient:  $-4^{\circ}\text{F}$  to  $140^{\circ}\text{F}$  ( $-20^{\circ}\text{C}$  to  $60^{\circ}\text{C}$ )

Media: max.  $+140^{\circ}\text{F}$  ( $+60^{\circ}\text{C}$ )

### Temperature Error

Additional error when temperature changes from reference temperature of  $68^{\circ}\text{F}$  ( $20^{\circ}\text{C}$ )  $\pm 0.4\%$  for every  $18^{\circ}\text{F}$  ( $10^{\circ}\text{C}$ ) rising or falling. Percentage of span.



## Standard Features

### Connection

Material: Copper alloy

Center back mount (CBM)

Lower back mount (LBM) - 48x24 mm and 72 x 36 mm

1/8" NPT or 1/4" NPT limited to wrench flat area

### Bourdon Tube

Material: Copper alloy

$\leq 600$  PSI: C-type

$> 600$  PSI: helical type

### Movement

Material: Copper alloy

### Dial

White aluminum with black lettering. 72 x 72 and 96 x 96 sizes supplied with pointer stop pin on dial

### Pointer

Black aluminum

### Case

72 x 72 and 96 x 96 mm: galvanized steel

48 x 24 and 72 x 36 mm: copper-alloy

### Window

Flat instrument glass

### Weather Protection

Dust resistant (NEMA 2 / IP 45)

### Panel Frame

72 x 72 and 96 x 96 mm: snap-fit, black-painted steel

48 x 24 mm: black-painted brass

72 x 36 mm: black plastic

### Order Options

Special connections limited to wrench flat area

Custom dial layout

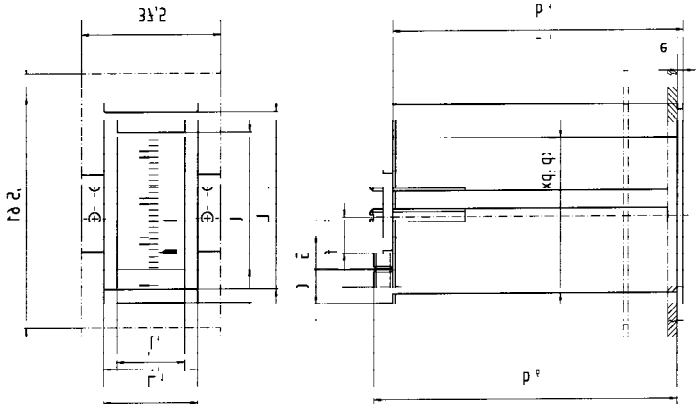
Other pressure scales available:

Bar, kPa,  $\text{Kg/cm}^2$  and dual scales

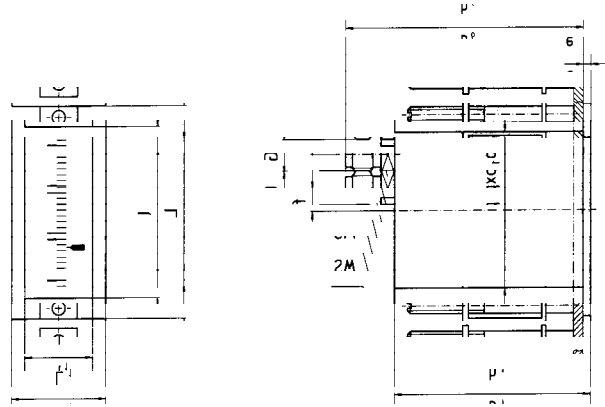
72 x 72 and 96 x 96 mm: stainless steel pressure system

**Dimensions:**

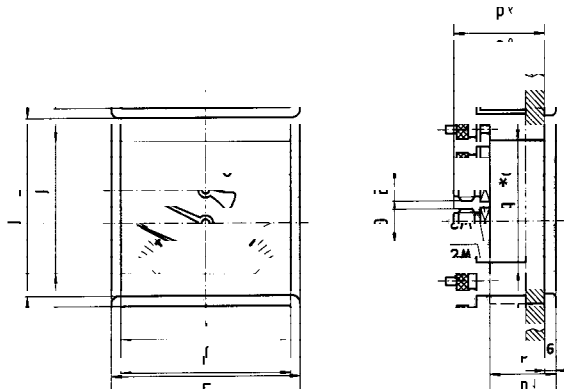
48 x 24 mm Lower Back Mount (LBM)



72 x 36 mm Top Back Mount (TBM)



72 x 72 mm Center Back Mount (CBM)



TYPE/SIZE	WEIGHT	KEY	b1	b6	e	f	G	L	L1	I	I1	p x p1	P*	SW
214.11 48 x 24	0.37 lb	mm	75.5	83.5	2	14	1/8" NPT or G 1/8	48	24	38	14	44.5 x 20.5	-	-
		in.	2.97	3.29	0.08	0.55		1.89	0.94	1.50	0.55	1.75 x .81	-	-
214.11 72 x 36	0.55 lb	mm	74.5	86.5	4	21	1/4" NPT or G 1/4B	72	36	56	20	66 x 29	-	14
		in.	2.93	3.41	0.16	0.83		2.83	1.42	2.20	0.79	2.6 x 1.14	-	0.55
214.11 72 x 72	0.66 lb	mm	29	42	6	-	1/4" NPT or G 1/4B	72	-	62	-	-	66	14
		in.	1.14	1.65	0.24	-		2.83	-	2.44	-	-	2.60	0.55
214.11 96 x 96	0.88 lb	mm	35	47	6	-	1/4" NPT or G 1/4B	96	-	88	-	-	90	14
		in.	1.38	1.85	0.24	-		3.78	-	3.46	-	-	3.54	0.55

THE MEASURE OF  
**Total Performance™**

**Ordering Information:**

State computer part number (if available) / type number / size / range / connection size and location / options required.

Specifications given in this price list represent the state of engineering at the time of printing. Modifications may take place and the specified materials may change without prior notice



**WIKAI Instrument Corporation**  
1000 Wiegand Boulevard  
Lawrenceville, Georgia 30043-5868  
Tel: 770-513-8200 Fax: 770-338-5118  
<http://www.wika.com> e-mail: [info@wika.com](mailto:info@wika.com)