

[View in browser](#)



[Home](#)

[Contact Us](#)

Celebrating 62 years in
business!



Spring has Sprung! No bunny does it like W. H. Cooke!

Funnies at the end of this newsletter!

W. H. Cooke & Co. has been in business since 1963, serving our customers as a manufacturer of thermocouples, RTD's, and thermistors and a distributor of instrumentation and controls for

temperature, pressure, level, flow, pH, RH, flame and gas detection and heaters.

Our product range includes chart recorders, chart paper, pens, paperless recorders, data loggers, pumps, valves, motors, industrial oils, solvents, PPE, and lubricants.

We offer calibration and repair services as well.

GEMS Price Increase 4/12/25

Gems and all its brands including Gems, Setra, West, Partlow West, Cal Controls, Warrick will be affected. Price increase is below:

3.3% on all products manufactured in the US other than:

- 10% on ELS950, XLS-1, CAP-300
- 7% on Receivers
- 5% on FS380 and FS480
- 4.8% on Monitor products
- 4.4% on HVAC pressure products
- 6.0% on Dolan Jenner

W. H. Cooke is your supplier for Partlow, Partlow West, West Controls, Gems, and much more!

Reach out for a quote today!

Email your part number to team@whcooke.com for a fast quote!



Partlow MRC 5000, part number 51000011
(2 IN STOCK, HANOVER, PA)



Partlow MRC7000, part number 711000100021N3



Partlow Temperature Controller, part number 2111111



DEFINOX



Isolation valve

Isolation valves are often associated with another function, depending on the type of seal (all elastomer, diaphragm, metal to metal), the intended usage of the valve (sampling, adjusting, protecting other parts) but also the environment in which it is used (aseptic, explosive...). The main isolation usage consists in isolating the entire line, or a part of the fluid flow process, by totally closing off the liquid flow. The choice of the valve is made in function to the material wanted, the diameter in relation to the lines they will be installed on, as well as the conditions of use and cleaning.



Divert valve

A divert valve is used for directing the flow in a given direction. It allows the flow to be stopped in the upper or lower valve path or allows the flow to run freely along both paths. The choice of body configuration is related to the geometry of the process lines. The Definox range of valves allows for every useful valve body configuration, for the widest possible utilisation. For independent double plug valves, there are more than twenty standard configurations available. Added to that is a stepped and 3-body version that allows for increasing the number of combinations.



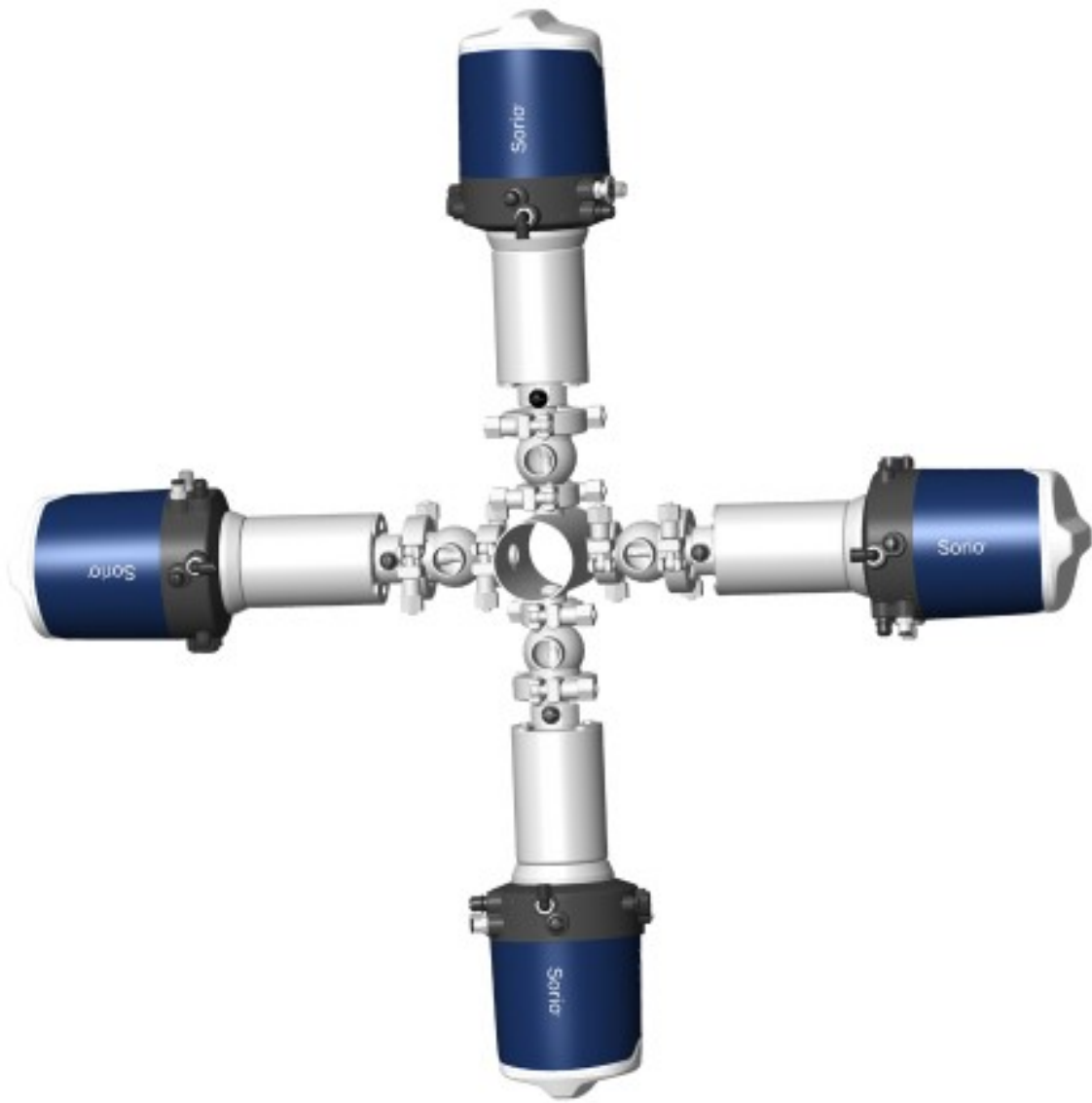
Mixproof valve

Used for optimizing the production line utilization rate, these single or independent double plug valves allow for exploiting the lines with an optimal sanitary protection level. The mixproof valve has an integrated leak chamber, able to detect a seal failure while avoiding the risk of cross contamination. Independent double plug valves permit the safe mixing of two different fluids. The independent opening and closing of the valve ensure a thorough cleaning of the valve without opening it.



Pigging System

During the transfer cycle, production lines can stock up an important quantity of residual product. The pig is pushed through the pipe by a fluid. The pigging solutions STARMOTION are modular and adapt easily to different process types. For specific environments or on applications needing adaptations (version double envelope, configuration double pigs), Definox's solutions are personalized almost to infinity following the customer's specifications.



Injection system

To satisfy the consumer, manufactured products come in endless varieties with more and more features, colors and flavors. The injection of concentrated flavors or colorants in the base product is a common procedure. These often-costly additives must be precisely dosed. The Starwheel or Starmanifold injection systems simplify the injection. By injecting these additives during transfer phases, the creation of batches becomes easier and making variants is faster. Productivity of the lines is optimized.

FEATURED LINE

Micronics Clamp on Flow Meters

Exciting new offering from Micronics Clamp on Flow Meters!

The U1000 wall mounted flow meter **and** BTU can now be offered with BacNet capability!



Pipe range 0.75 - 8"

*Need a meter for a XP area? We got that covered!
The UX5500 is a Class 1 Div 1 meter!*



Pipe range 2 - 12"

**1 Week Lead Time for MOST
Thermocouples & RTD's!**

Since 1963

THERMOCOUPLES & RTDS



W. H. COOKE & CO., INC.
6868 York Road
P. O. Box 893
Hanover, PA 17331

Phone: (717) 630-2222

Fax: (717) 637-9999

Email: team@whcooke.com

Web: www.whcooke.com

[Click here for
Thermocouple & RTD Brochure](#)

LUNAR-PAK MINERAL INSULATED (BENDABLE) T/C'S

HOT JUNCTION TYPES		Grounded (G)	Ungrounded (UG)	Exposed (E)
FIG. 1	Thermocouple w/20 ga. fiberglass insulated lead wire.			
FIG. 2	Thermocouple w/20 ga. fiberglass insulated lead wire and stainless steel overbraid.			
FIG. 3	Thermocouple w/20 ga. fiberglass lead wire and terminated with male plug.			
FIG. 4	Thermocouple w/20 ga. fiberglass insulated lead wire and stainless steel overbraid and terminated with male plug.			
FIG. 5	Thermocouple w/20 ga. fiberglass insulated lead wire and terminated with female jack.			
FIG. 6	Thermocouple w/20 ga. fiberglass insulated lead wire and stainless steel overbraid and terminated with female jack.			
FIG. 7	Thermocouple terminated with male plug.			
FIG. 8	Thermocouple terminated with female jack.			
FIG. 9	Thermocouple terminated with hinged flip top cover weatherproof head and 1/2" x 1/2" NPT x 1-1/2" long 316 SS NPT mounting fitting brazed to sheath. For spring loading add "SL" to end of part number. Spring loaded type is not sealed from process and is generally used with a thermowell.			
NOTE: Screw cover head design is available at same price but must be requested otherwise flip top head will be supplied.				
FIG. 9-EP	Thermocouple terminated with explosion proof head - Same description as above except with screw cover explosion proof head assembly.			
FIG. 10-NPT	Replacement thermocouple element for figures 9 through 9-EP. Sheath is silver soldered to 1/2" NPT 316 SS MTG Nut.			

W. H. Cooke & Co., Inc. - Product Lines

Phone: 717-830-2222 Fax: 717-837-9999 team@whcooke.com www.whcooke.com

W. H. Cooke & Co., Inc. Thermocouples & RTDs	ADAM Scale, Balance & Calibration Weights	AEROFLEX EPDM Pipe & Duct Insulation	AlpHa pH, ORP, Conductivity	ANFIELD Precision Level
Antunes Air & Gas Pressure Switches	APG Automation Products Group, Inc. Level & Pressure Sensors/Transmitters	ATHENA Temperature and Process Controls	BACKER MARATHON Centrifugal & Recirculators	CAL CNC Controls
CHROMALOX Industrial Heating & Heat Trace Solutions	COMARK A Fluid Company Medical Data Logger	ControlAir Precision Proportional Electropneumatic Controls	Control Warehouse Flowmeters - Magnetic, Venturi, Ultrasonic, Coriolis, Positive Displacement	CRISTO Unique Gold Sheath Catalysts/Reactors
Danfoss Direct, VSD	DATATRACK Digital Panel Meters	DUNGS Combustion Controls	Dwyer Precision Flow, Level Sensors & Controls	EDWARDS Vacuum Pumps
ELETTA Flow Meters & Flow Switches	ENCODER PRECISE COMPANY Encoder Instruments, Absolute, Rotary	EXTECH A FLUID COMPANY Infrared Heat Guns, Electrical Test Instruments	FUTUREDEVELOP Temperature Controls	GDS Corp GAS ANALYZER SYSTEMS Gas & Flame Detection
Gems Sensors & Controls	GE Portable Gas Detection Instrumentation	GP-50 HEAT PRECISION High Pressure & Temperature Transducers	HBO HBO CONTROLS	HARVEST INDUSTRIES INC. GAS ANALYZER SYSTEMS
HTM Sensors & Controls Proximity, Photoelectric, Pneumatic, Capillary	HTS Amptek X-ray Spectroscopy	Imada.com Pneumatic Torque Measurement	INDEECO Immersion & Tubular Electric Heating Elements	INOR Temperature Transmitters
INTELLERT Heaters for Drums, Tanks & Containers	JENCO Laboratory & Industrial Instruments, Temperature & pH	KOBOLD Level, Pressure, Flow Instruments	LAUREL ELECTRONICS Electronics for Measurement, Control & Interfacing	LOVE Temperature Controllers
Level Control Industrial & Laboratory Level Controls	MadgeTech Wireless Data Loggers	MADGETECH Wireless Data Loggers	micronics Portable Clamp-On Flow Meters	MONARCH Data Loggers (Paperless Recorders)
next thermal Heat Tracing	NOVUS We Measure, We Monitor, We Record Measurement, Control, Recording	Parlow Temperature Controls & Recorders	PRECISION DIGITAL Panel & Process Meters	PROCESS TECHNOLOGY Heat Process Heating & Cooling Equipment
REOTEMP Thermometers & Pressure Gauge/Transmitters	Sensorex Laboratory & Industrial Instruments, Temperature & pH	setra Sensors	Sika Electronic Measuring & Calibration Instruments	
UNITHERM Industrial Insulation Market	VAISALA Humidity Transmitters	W. H. COOKE & CO. WARRICK CONTROLS	WEST Control Solutions	WIKAL

Click here for
Line Sheet

2025

W. H. Cooke & Co., Inc.

Since 1967 Manufacturer of thermocouples, RTDs, and thermistors. Distributor of instrumentation and controls for temperature, level, flow, pressure, pH, RH, flame & gas detection, boiler control products, industrial heaters & insulation, chart recorders, chart paper & pens, paperless recorders, data loggers, pumps, sanitary valves, motors, lab scales, pH buffer solutions, and much more.

Controls **Heaters** **Sensors**

www.whcooke.com

Click here for
Cooke Product
Brochure

Follow Us:



Check out our video!

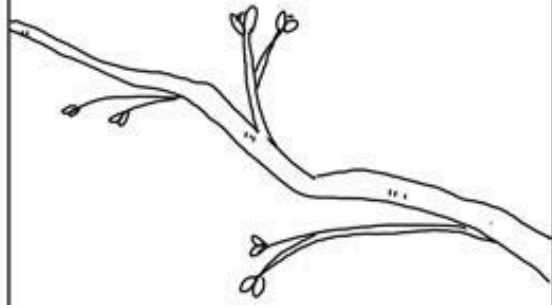


SPRING LAUGHS!





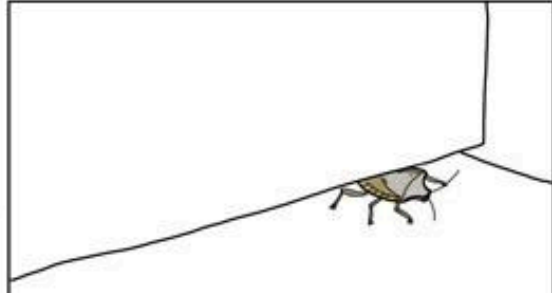
the last signs of
winter melt away



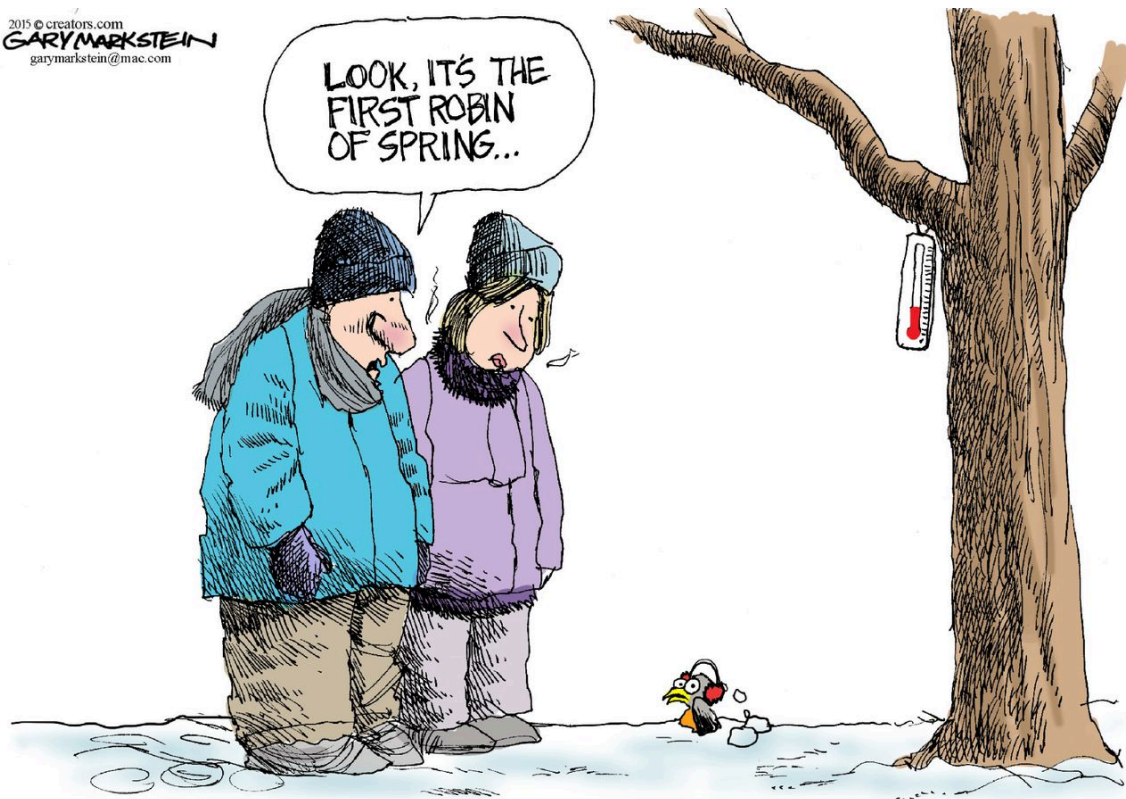
the trees begin
to blossom



a chipmunk awakens
from slumber



and a stink bug enters
your house and somehow
finds your bedroom



Prickles
4-20-13



FIRST SIGN OF SPRING

Prickles Comics on Facebook.com/BizarroComics Vol 11 Page 10000

AHH, SPRING!



I SAY LET'S MOVE
ON TO SUMMER.



**AH-
CHOO!**



Best In Show

by Phil Juliano



W.H. Cooke & Co., Inc.
6868 York Rd.
Hanover, PA 17331

team@whcooke.com
717-630-2222

If you no longer wish to receive this newsletter, [click here to unsubscribe.](#)

[Legal Notice](#) • [Terms of Use](#) • [Privacy Policy](#)